



MAYOR
WILLIAM R. WILD



CityofWestland.com

For Immediate Release

August 30, 2022

Contact:: Mayorwild@cityofwestland.com

Westland, MI (August 30,2022) City of Westland Responds to Storm Damages and Power Outages by Opening Charging Stations/Cooling Centers

In response to power outages within the City of Westland, the City has opened several Cooling Centers that will also serve as Charging locations for residents phones or electronic devices until power is restored throughout the City.

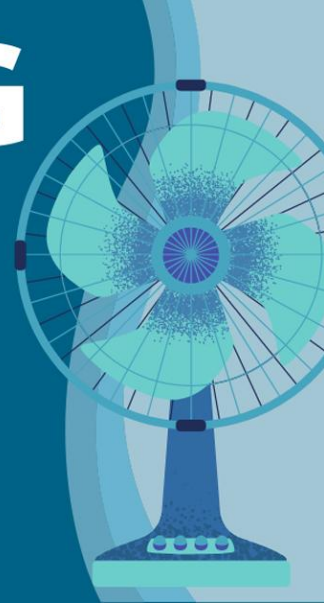
- Westland City Hall, located at 36300 Warren Road – Monday through Friday 9:00 a.m. – 5:00 p.m.
- Fire Station #1, located at 35701 Central City Parkway), 7 days a week from 8:00 a.m. – 8:00 p.m.
- Fire Station #3, located at 28801 Annapolis, 7 days a week from 8 a.m. – 8 p.m.
- The Police Station, located at 36701 Ford Road) 24 hours, 7 days a week
- The Friendship Center, located at 1119 N. Newburgh Road, Monday through Friday from 9:00 a.m. until 5 p.m.
- Jefferson Barns Community Vitality Center, located at 32150 Dorsey Road, Monday and Thursday 9:00a.m. – 6:00p.m., Tuesday and Wednesday 9:00 a.m. – 7:00 p.m. and Friday 9:00 a.m. – 5:00 p.m.
- William P. Faust Library, located at 6123 Central City Parkway Monday through Thursday 9:00 a.m.– 9:00 p.m., Friday and Saturday 9:00 a.m. – 5:00 p.m.

Residents are encouraged to call the American Red Cross Michigan Region at 1-800-733-2767 for a variety of assistance options. Please notify friends, family and neighbors who might not have access to this information.

If you have any branches or tree limbs that fell on your private property, please bring them to the curb with the cut ends facing out and our crews will chip and/or remove them for you. If you have a downed tree or in the City right of way, please contact the Department of Public Services at 734-728-1770. If you have a downed wire, please call 911 and DTE Energy at 1-800-477-4747. More than 260,000 customers are currently without power due to the severe storms and 70 mph winds that swept through Michigan. To view the DTE outage map: <https://outage.dteenergy.com/map>.



COOLING CENTERS *and* *Charging Stations*



Stay Connected:

facebook



The City of Westland, Michigan's 10th largest city, has a population of more than 85,000 residents and is located in western Wayne County; just minutes from downtown Detroit, 2 airports and major freeways. The City of Westland's Executive Branch is led by full-time Mayor William R. Wild, who was just re-elected to serve a four-year term in 2022. First elected in 2007, Mayor Wild is the City's longest serving Mayor. The Legislative Branch consists of seven City Council members.

Office of Mayor William R. Wild | 36300 Warren Rd., Westland, MI 48185

[Unsubscribe administrator@cityofwestland.com](mailto:unsubscribe@cityofwestland.com)

[Update Profile](#) | [Constant Contact Data Notice](#)

Sent by mayor@cityofwestland.com