



Walk and Roll Westland

Pedestrian and Bicycle Safety Action Plan

Steering Committee #2

July 13, 2021



Public Engagement Debrief

- Review of Stakeholder Committee Meeting
- Review of Public Meeting #1
- Public Survey Results



Stakeholder Committee

- Expressed desire for **sidewalk gaps** to be filled
- **Connect bike facilities** to existing and planned **greenways** and **blueways**
- Want to see **better connection to trails** on north and south side of City
- Interest in the **health aspects** of non-motorized infrastructure



Public Meeting #1

- Attendees said they typically walk and bike in the **northern portion of the City**
- People feel **unsafe** on the **high traffic streets** (Wayne, Ford, Cherry Hill)
- **Maintenance issues** in the **south portion** of the City
- Desire for **access to shopping and entertainment**



Public Meeting #1

- **Connections** needed to the **southeast corner** of the City
- Desire for **better sidewalks** throughout the City
- Residents would like to see **more bike racks**, and **educational and safety information** about cycling
- Many **Wayne Rd** intersections **feel unsafe** to when **crossing**



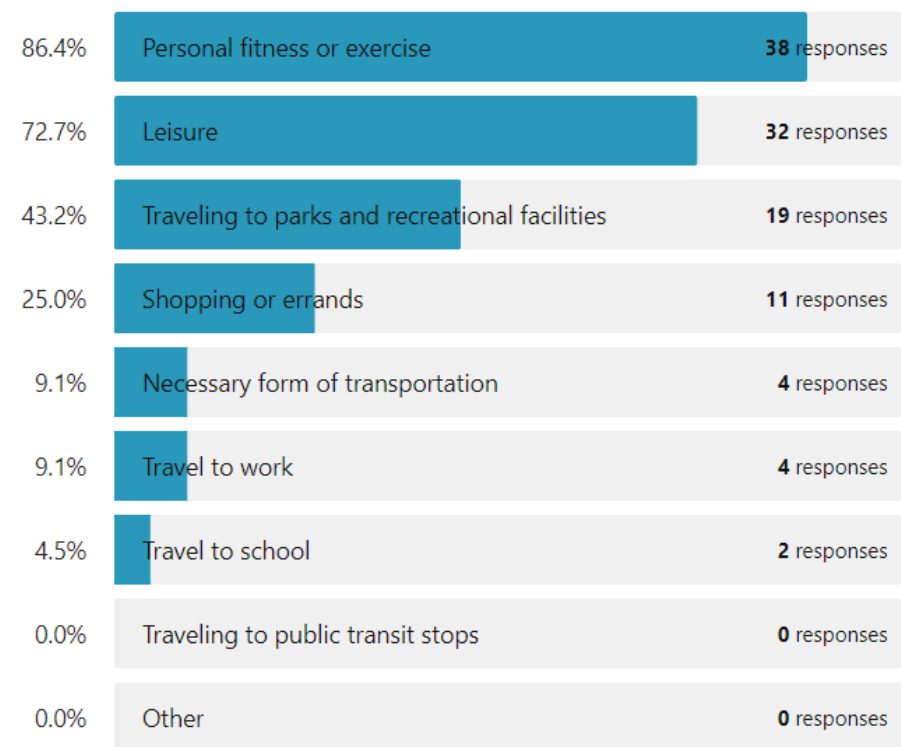
Public Input Survey

- 46 Responses
- **Half** said they bike or walk a **few times a week**
- **87%** walk and bike for **fitness**
- **25%** to go **shopping or run errands**
- **65% like** that there are **places to ride** their bike to in Westland

✓ 2

When you walk or bike in Westland, what is the typical nature of your trip?
Check all that apply.

44 out of 45 people answered this question (with multiple choice)



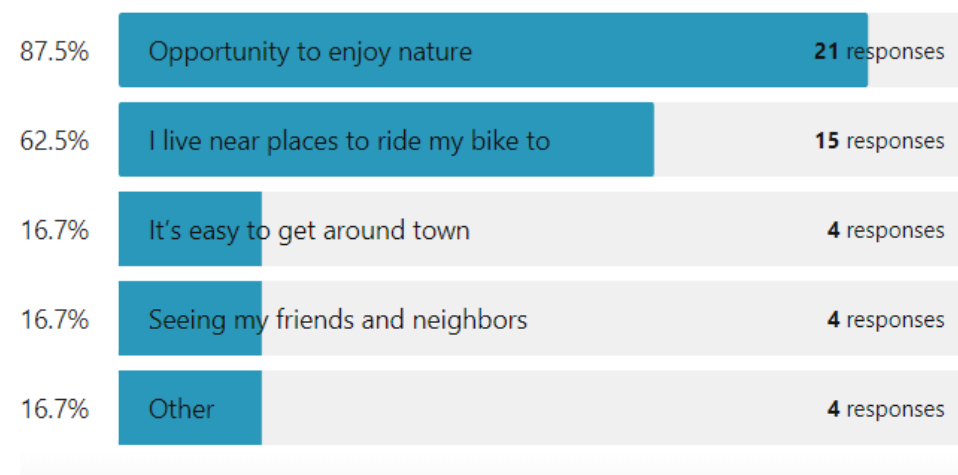


Public Input Survey

- **65% like** that there are **places to ride** their bike to in Westland
- **Most** respondents (**46%**) **walk** more often **than bike** in Westland

✓ 5 What do like most about biking in Westland? Choose your top 2.

24 out of 46 people answered this question (with multiple choice)



Public Input Survey

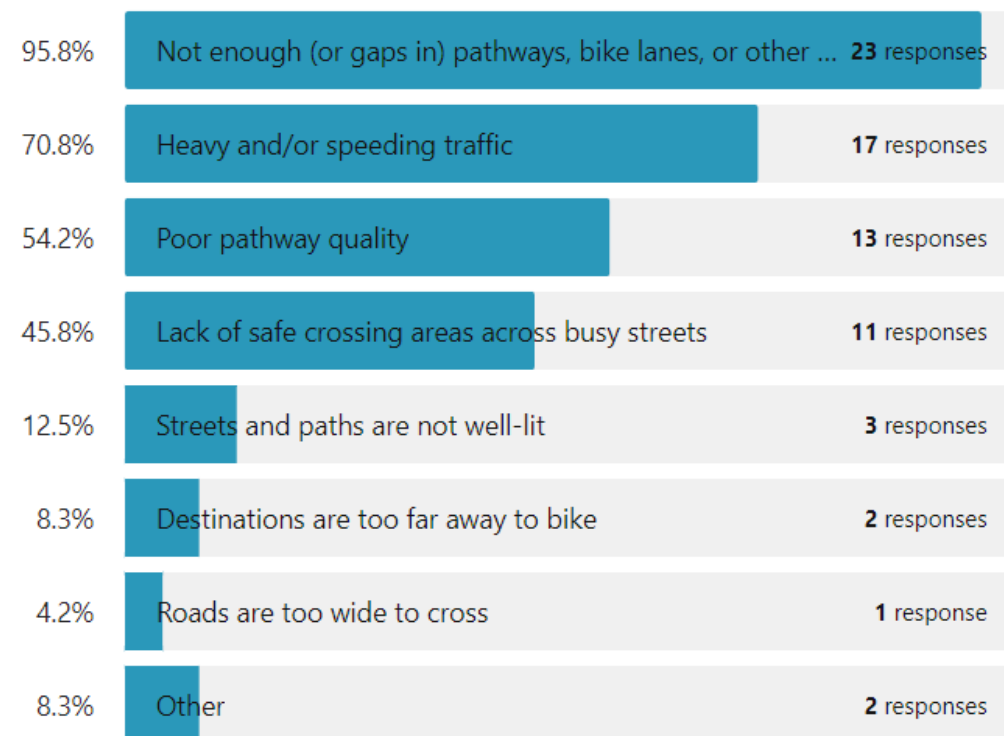
- **96%** said that **gaps in the network** make biking challenging
 - **71%** cite **heavy or speeding traffic**
- People want to be able to walk and bike to **Parks, Civic Buildings, and Shopping**



6

What challenges do you face when biking in Westland? Choose your top 3.

24 out of 45 people answered this question (with multiple choice)



Public Input Survey

- About **70%** say **gaps in the sidewalk** network make it hard to walk
 - **52%** say poor sidewalk quality
 - **48%** say destinations are too far away
- People want to be able to walk on **well lit, comfortable, and safe** sidewalks.

✓ 9

What challenges do you face when walking in Westland? Choose your top 3.

32 out of 46 people answered this question (with multiple choice)



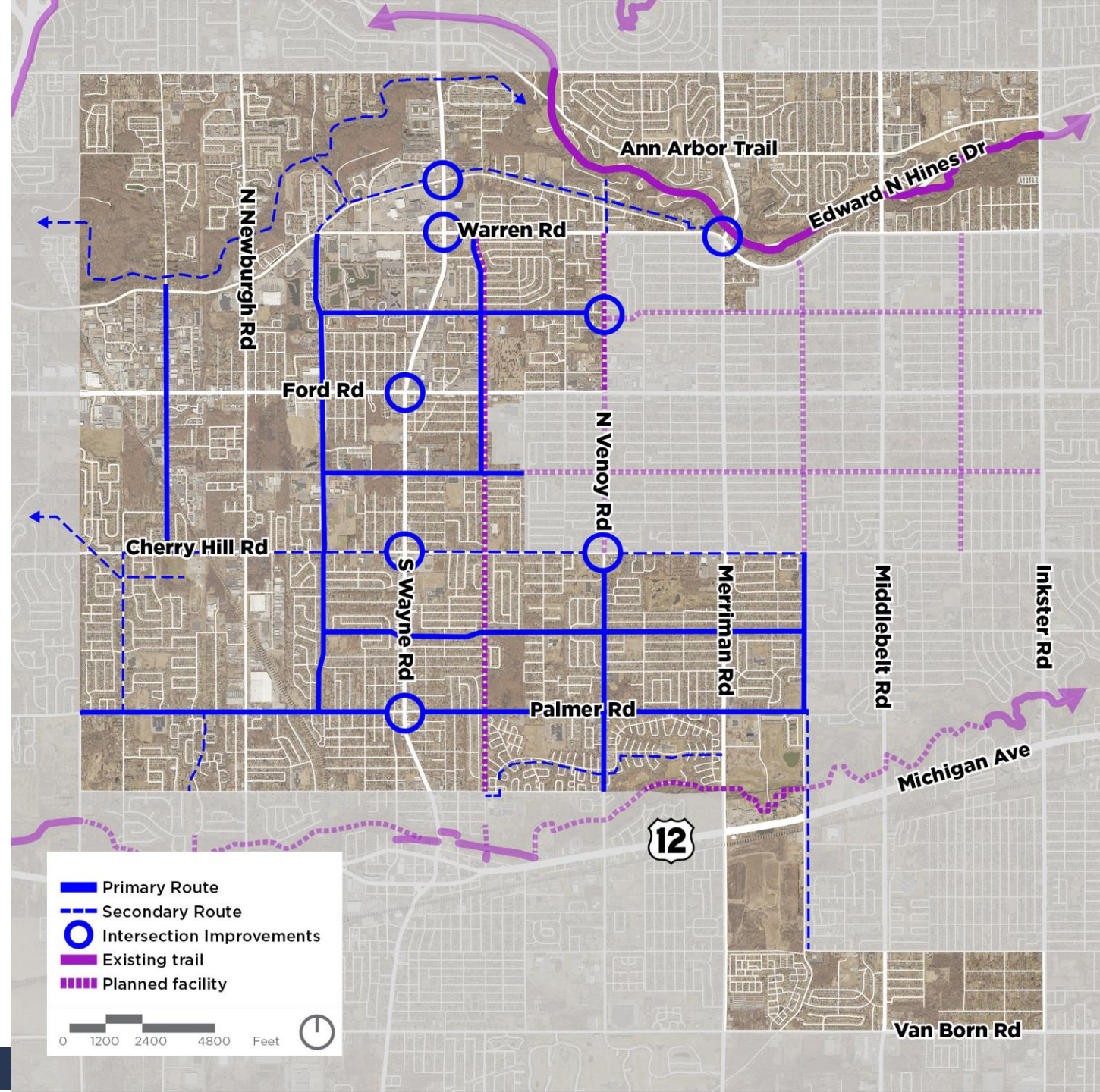


Preliminary Corridors

OHM

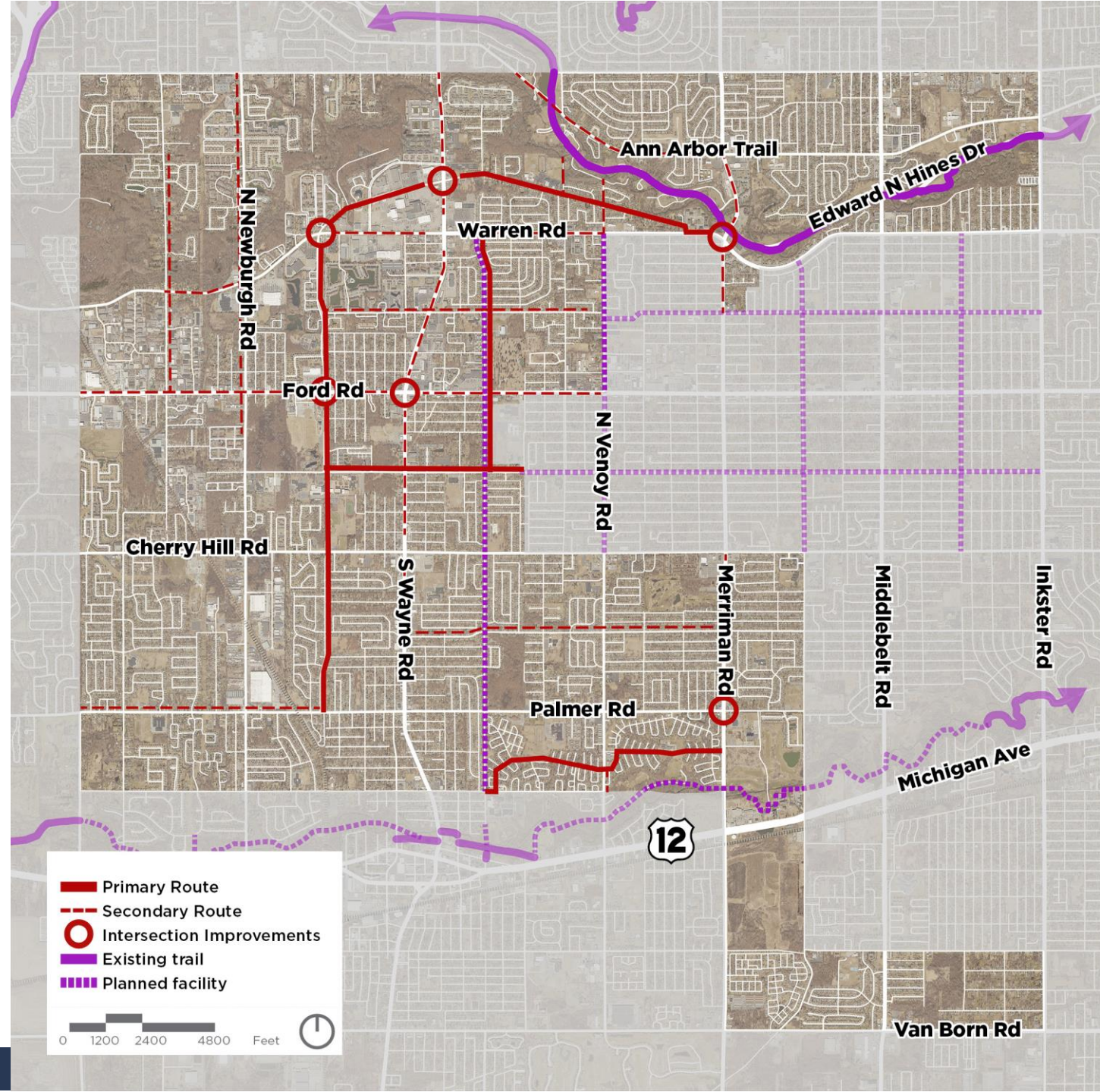
Brainstorming Results

- Central City Pkwy from Warren to Palmer
- Hunter Ave and Marquette St to Wildwood St Bike Path
- Neighborhood connections on...
 - Avondale St
 - Palmer Rd
 - Hix Rd



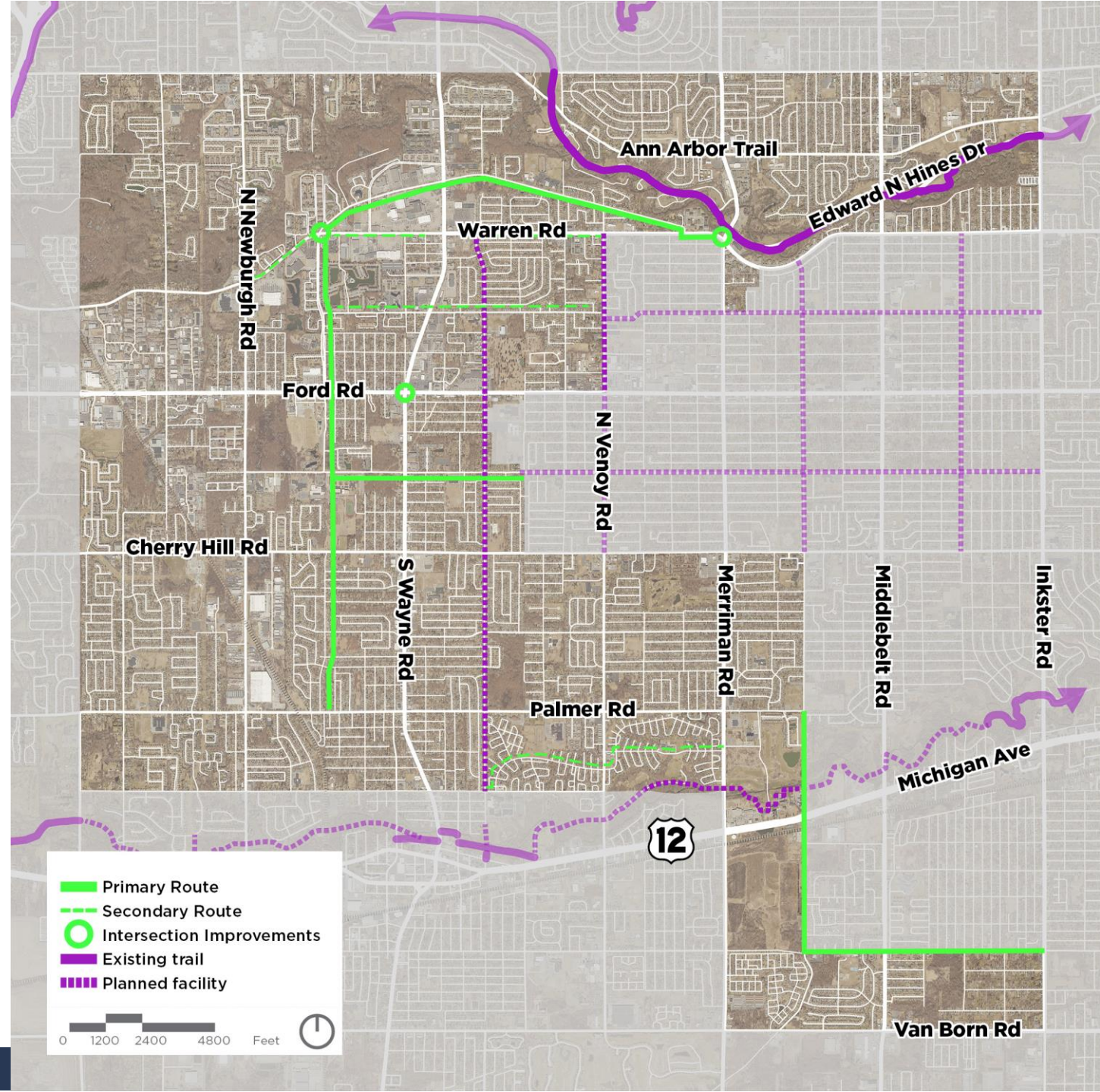
Steering Committee Brainstorming Results

- Cowan Rd to Central City Pkwy down to Palmer Rd
- Marquette St to Wildwood St Bike Path
- Norwayne Neighborhood improvements



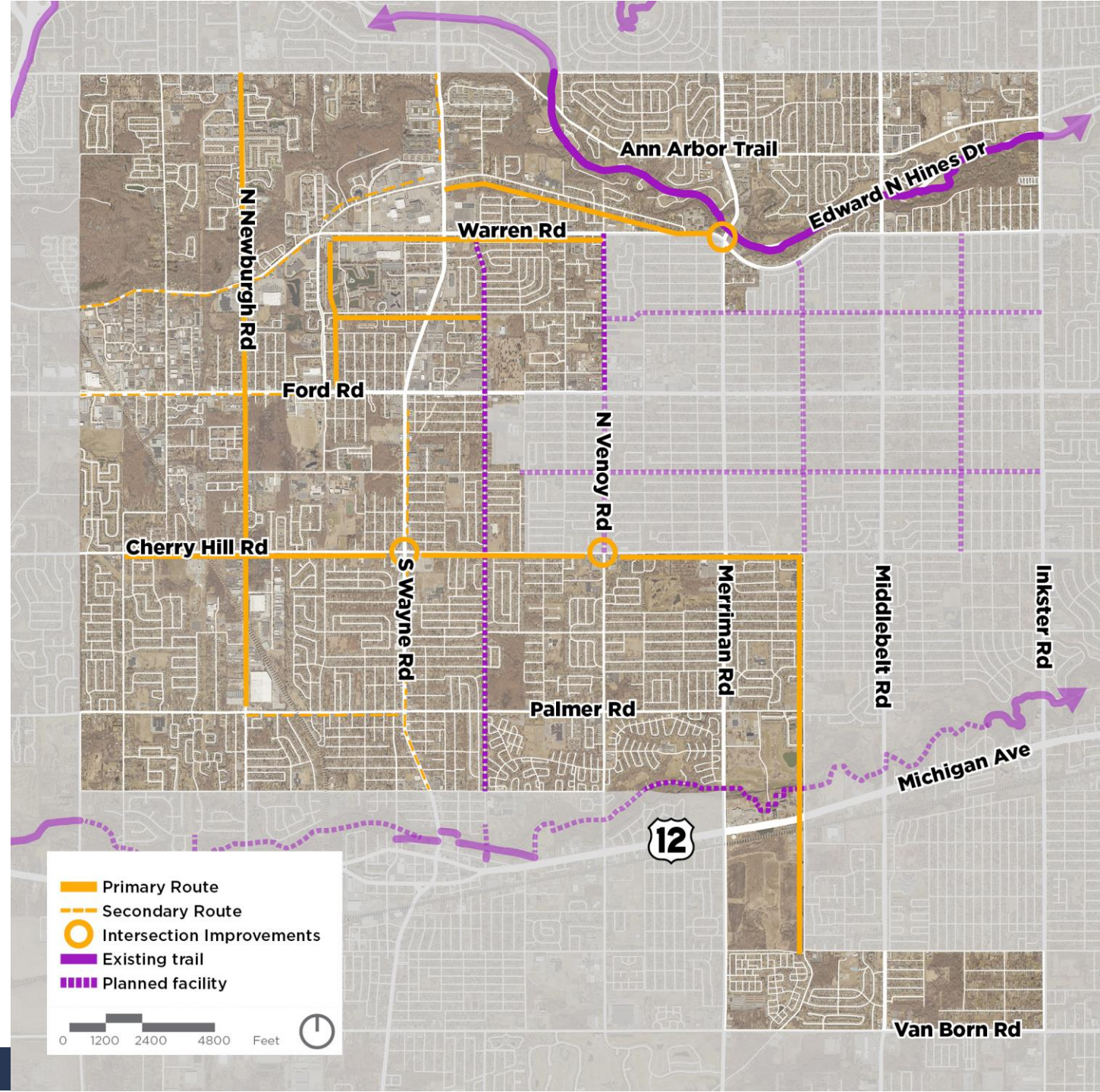
Public Meeting 1 Brainstorming Results

- Cowan Rd to Central City Pkwy down to Palmer Rd
- Marquette St to Wildwood St Bike Path
- Annapolis Park connection along Henry Ruff Rd



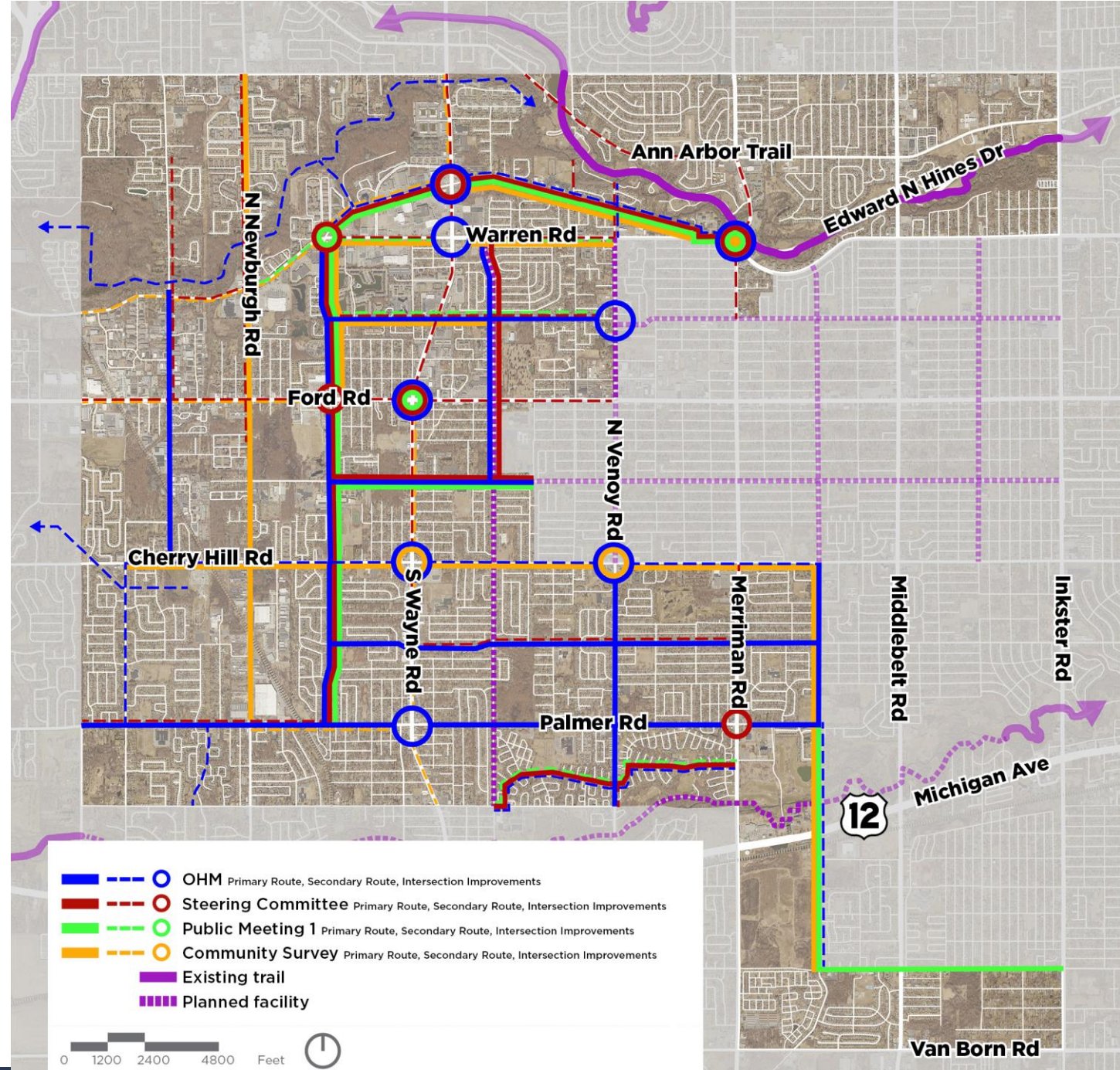
Community Survey Brainstorming Results

- Cowan Rd to Wayne Rd
- Central City Pkwy from Warren Rd to Ford Rd
- Hunter Ave to Wildwood St Bike Path
- Other important connections include...
 - Cherry Hill Rd
 - Newburgh Rd
 - Henry Ruff Rd



Combined Brainstorming Results

- Cowan Rd to Central City Pkwy down to Palmer Rd
- Hunter Ave and Marquette St to Wildwood St Bike Path
- Warren Rd from Central City Pkwy to Merriman Rd
- Connections to/in...
 - Annapolis Park
 - Norwayne Neighborhood
 - Holiday Nature Preserve
 - Upper Rouge Parks Network

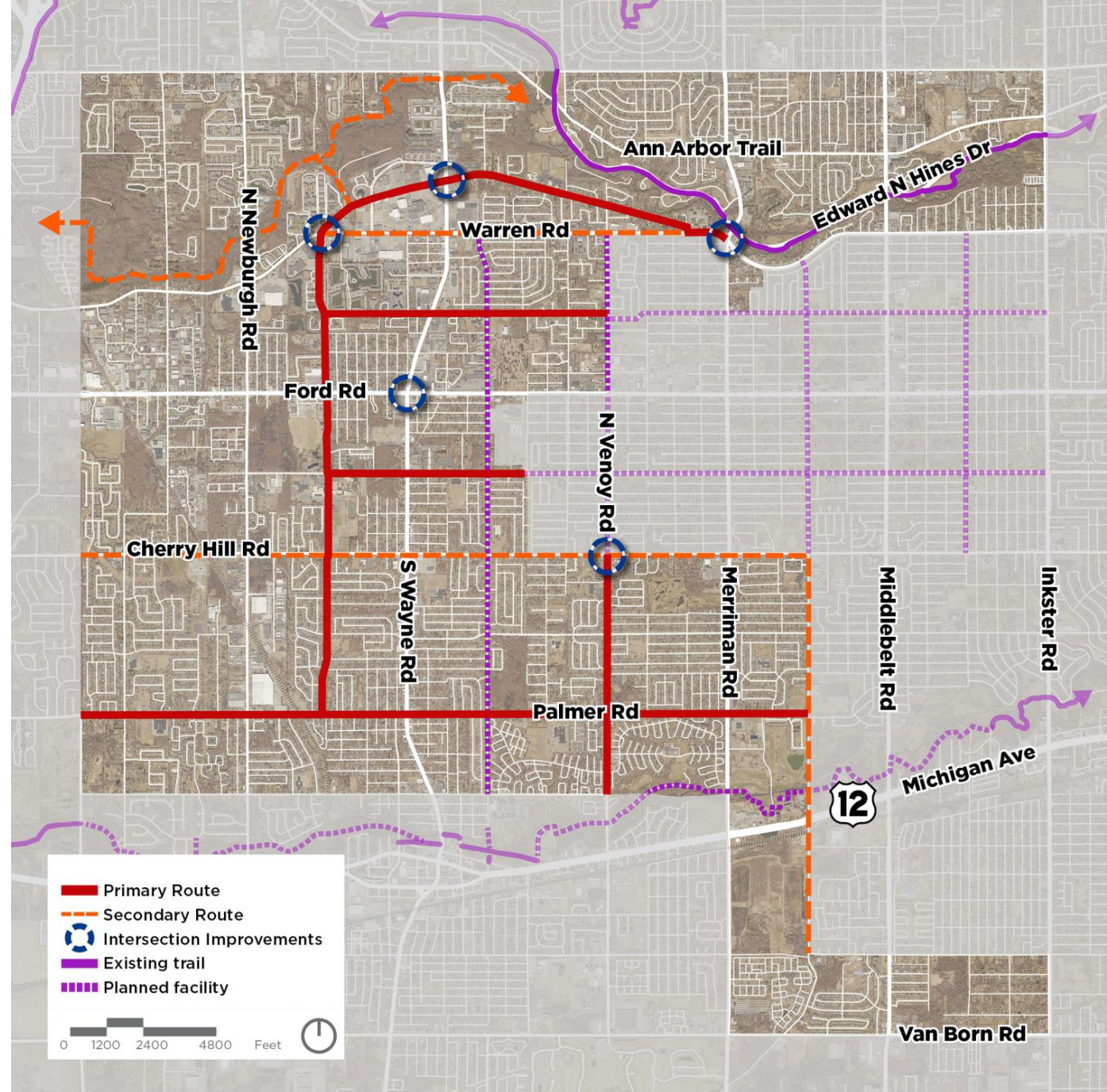




Primary and Secondary Routes

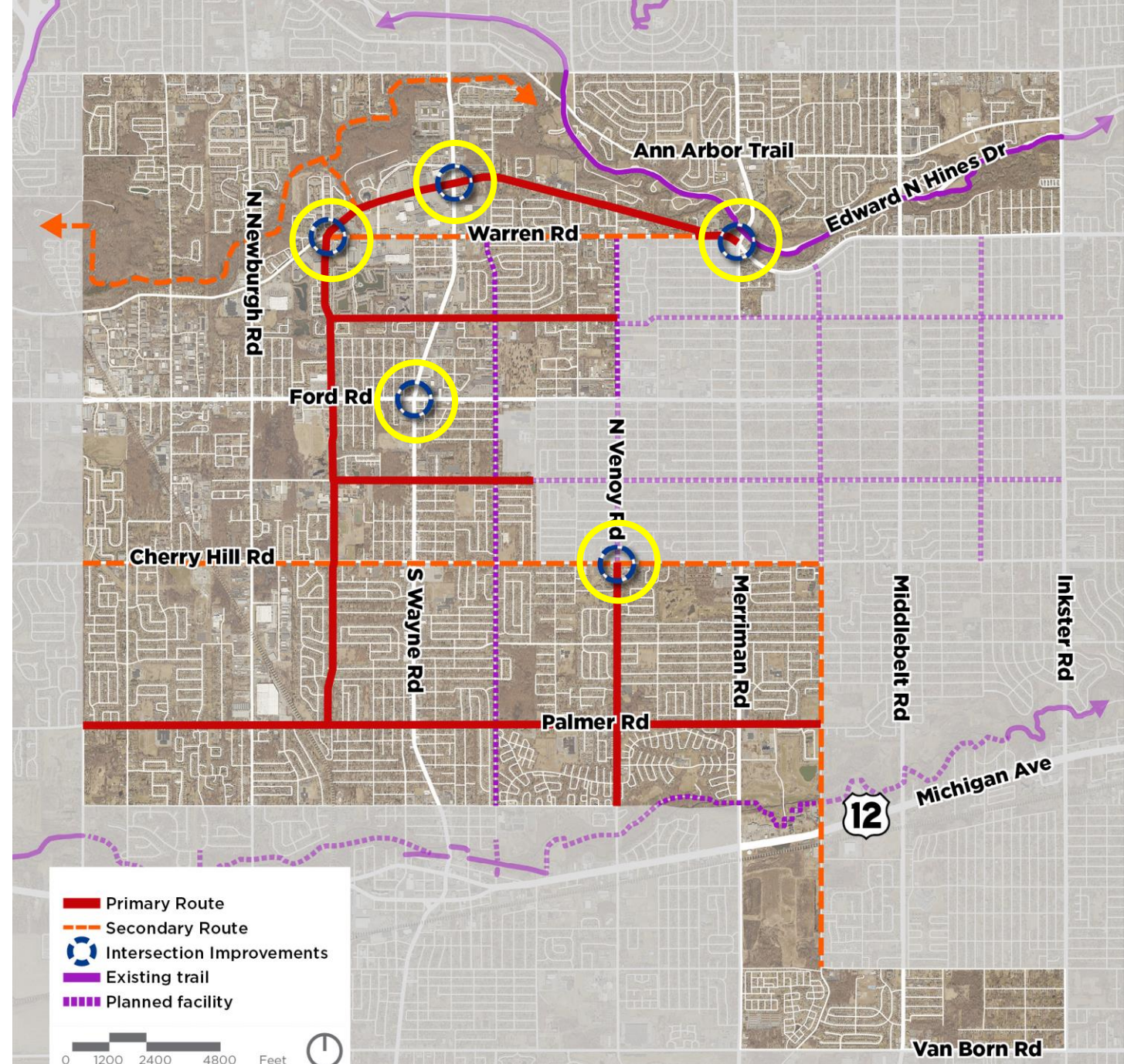
Primary Route Ideas

- Central City Parkway
- Cowan Rd
- Marquette St
- Grand Traverse St
- Henry Ruff Rd
- Hunter Ave



Primary Intersections

- Warren at Ann Arbor Tr
- Central City at Warren
- Ford at Wayne
- Wayne at Central City
- Venoy at Cherry Hill





Potential Facilities

Sharrow Lane

- Least amount of road space needed
- Easy to implement
- Good for low stress streets
- High visibility pavement marking
- Does not offer any protection from vehicles
- Bikes share space with vehicles



Bike Lane

- Dedicated lane for bikes to use
- Needs some roadway space
- Good for low to medium stress streets
- Does not offer any protection from vehicles



Buffered Bike Lane

- Dedicated lane for bikes to use
- Provides additional space between vehicles and bike space
- Good for medium stress streets
- Needs more roadway space to construct
- Does not offer any physical protection from vehicles



Protected Bike Lane

- Dedicated lane for bikes
- Provides protection between vehicles and bikes
- Good for medium to high stress streets
- Needs more roadway space to construct
- Costly to implement due to additional infrastructure needed



Cycle Track

- Two-way design keeps bikes on one side of the street
- Protected design reduces conflicts between bikes and cars
- Can help preserve on-street parking
- Hard for new cyclists to get use to
- Costly to implement



Shared Use Path

- Can be used by bikes and pedestrians
- Bikes and peds can travel both ways
- Set back farther from roadway to reduce conflicts
- Connects easily with existing trails
- Protected from vehicles
- Costly to implement



Next Steps

- Refinement of Primary Routes
- Project Identification
- Example designs
- Steering Committee Meeting 2
- Mid-Phase Public Check In