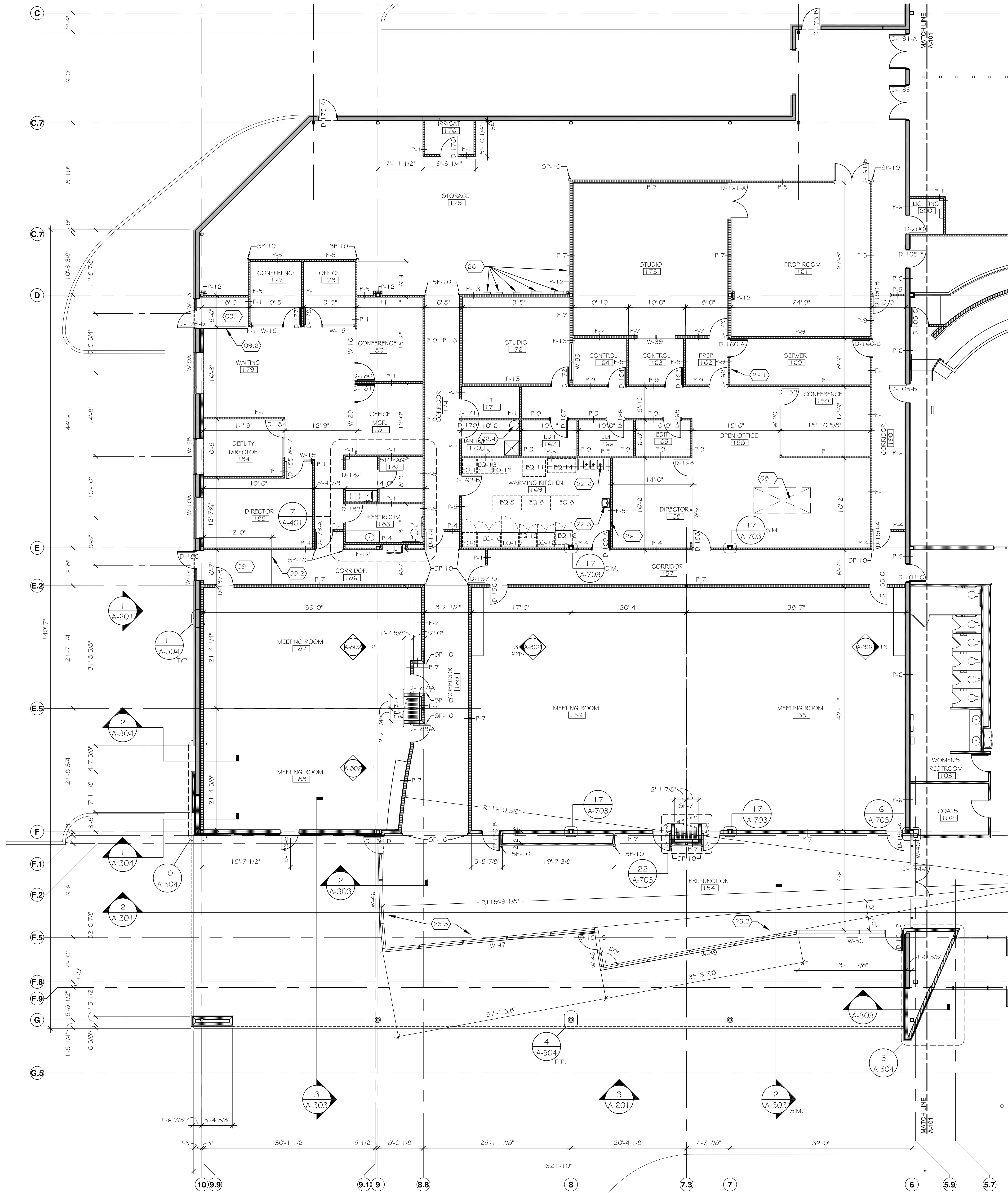
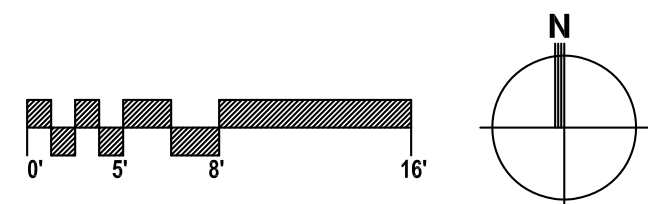


DRAWING PATH: P:\600_0100013510010_Westland City COU\BASIS Drawings\New Columbus Facilities Project\Contract\0135-13-001A-102.dwg Aug 01, 2013 - 6:33pm



FLOOR PLAN - PART B

SCALE: 1/8" = 1'-0"



FLOOR PLAN GENERAL NOTES:

- DO NOT SCALE DRAWINGS. IF DIMENSIONS CANNOT BE DETERMINED OR DOCUMENTS ARE IN CONFLICT, THE CONTRACTOR SHALL OBTAIN CLARIFICATION FROM THE ARCHITECT PRIOR TO CONTINUATION OF WORK.
- DIMENSIONS ARE FROM COLUMN CENTERLINES, FACE OF MASONRY OR FACE OF STUDS.
- ALL DIMENSIONS LOCATING DOORS AND/OR WINDOWS ARE TO CENTERLINE OF OPENING, UNLESS NOTED OTHERWISE.
- ALL DOORS ARE LOCATED TIGHT TO ADJACENT PERPENDICULAR WALLS/PARTITIONS UNLESS NOTED OTHERWISE.
- PROVIDE FIRE RETARDANT TREATED WOOD BLOCKING AT ALL WALL OR CEILING ATTACHED ITEMS.
- ALL CEILING, WALL AND FLOOR PENETRATIONS SHALL BE SEALED WITH APPROPRIATE MATERIAL. ALL FIRE PENETRATIONS SHALL BE SEALED AND IDENTIFIED PER LOCAL AND STATE BUILDING CODES.
- SEE A-001 FOR SITE AND KEY PLAN INFORMATION.
- SEE SHEETS A-002 - A-100 FOR INFORMATION RELATED TO FIRE RATED ASSEMBLIES.
- SEE SHEETS A-501 - A-503 FOR ENLARGED PLANS AND DETAILS.
- SEE SHEETS A-601 - A-605 FOR ALL SCHEDULES.
- SEE SHEETS A-701 & A-801 FOR INTERIOR DETAILS AND INTERIOR FINISHES.
- COORDINATE LOCATION OF FIRE EXTINGUISHERS WITH LOCAL FIRE INSPECTOR, NFPA & THE OWNER'S INSURANCE COMPANY. MAXIMUM TRAVEL DISTANCE TO FIRE EXTINGUISHER = 75'.
- PROVIDE ADA SIGNAGE AT EXITS & PUBLIC RESTROOMS AS REQUIRED BY CODE AND PER ADA GUIDELINES.
- REFER TO EXTERIOR ELEVATIONS FOR WINDOW LOCATIONS NOT SHOWN ON PLAN.

FLOOR PLAN CODED NOTES:

DIVISION 03 - CONCRETE

- 03.1 NEW CONCRETE SIDEWALK (REFER TO CIVIL & LANDSCAPE SHEETS)
- 03.2 4" EQUIPMENT CONCRETE PAD

DIVISION 04 - MASONRY

DIVISION 05 - METALS

- 05.1 NEW GALVANIZED STEEL PLATFORM (REFER TO STRUCTURAL SHEETS)

DIVISION 06 - WOOD, PLASTICS, & COMPOSITES (REFER TO ARCH. WOODWORK SCHEDULE)

DIVISION 07 - THERMAL & MOISTURE PROTECTION (REFER TO INSULATION SCHEDULE)

DIVISION 08 - OPENINGS (REFER TO DOOR & WINDOW SCHEDULES)

- 08.1 SKYLIGHT ABOVE

DIVISION 09 - FINISHES (REFER TO ROOM TREATMENT SCHEDULE)

- 09.1 PROVIDE WALK OFF CARPET THIS AREA.
- 09.2 PROVIDE TRANSITION STRIP BETWEEN FLOORING TYPES.
- 09.3 6"-0" DIA. INLAY IN TILE FLOOR - PROVIDED BY OWNER.
- 09.4 PROVIDE METAL COLUMN ENCLOSURE, REFER TO DETAIL 4/A-504 (SIM.)

DIVISION 10 - SPECIALTIES (REFER TO SPECIALTY SCHEDULE)

DIVISION 11 - EQUIPMENT (REFER TO EQUIPMENT SCHEDULE)

DIVISION 12 - FURNISHINGS (NOT USED)

DIVISION 21 - FIRE SUPPRESSION

- 21.1 EXISTING FIRE RISER (REFER TO FIRE PROTECTION SHEETS)

DIVISION 22 - PLUMBING

- 22.1 BOILERS (REFER TO PLUMBING AND HVAC SHEETS)
- 22.2 FLOOR MOUNTED 3-COMPARTMENT SINK (REFER TO PLUMBING SHEETS)
- 22.3 WALL MOUNTED HAND SINK (REFER TO PLUMBING SHEETS)
- 22.4 FLOOR MOUNTED WATER HEATER (REFER TO PLUMBING SHEETS)

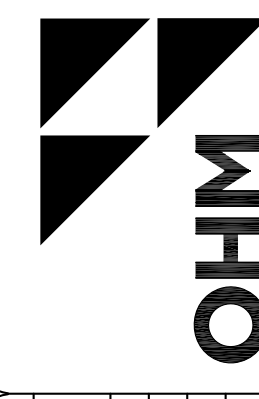
DIVISION 23 - HVAC

- 23.1 AIR-HANDLING UNIT (REFER TO HVAC SHEETS)
- 23.2 CHILLER (REFER TO HVAC SHEETS)
- 23.3 FLOOR MOUNTED FIN TUBE RADIATOR (REFER TO HVAC SHEETS)
- 23.4 GAS METER (REFER TO HVAC SHEETS)
- 23.5 HVAC EQUIPMENT (REFER TO HVAC SHEETS)

DIVISION 26 - ELECTRICAL

- 26.1 ELECTRICAL PANELS/EQUIPMENT (REFER TO ELECTRICAL SHEETS)
- 26.2 EMERGENCY GENERATOR (REFER TO ELECTRICAL SHEETS)

DIVISION 32 - EXTERIOR IMPROVEMENTS (REFER TO CIVIL & LANDSCAPE SHEETS)



OHM

WESTLAND CITY HALL
36300 WARREN ROAD
WESTLAND, MI 48168

ISSUED FOR:
BIDDING & PERMIT

SHEET
A-102

DATE
28 JUL 13

PROJ
US

SECTION
1

TOWN
CITY OF WESTLAND

RANGE
CITY

COUNTY
WAYNE

CITY/LAND TOWNSHIP
WESTLAND

SCALE
AS NOTED

HAS NOTED

VERT DATUM
L

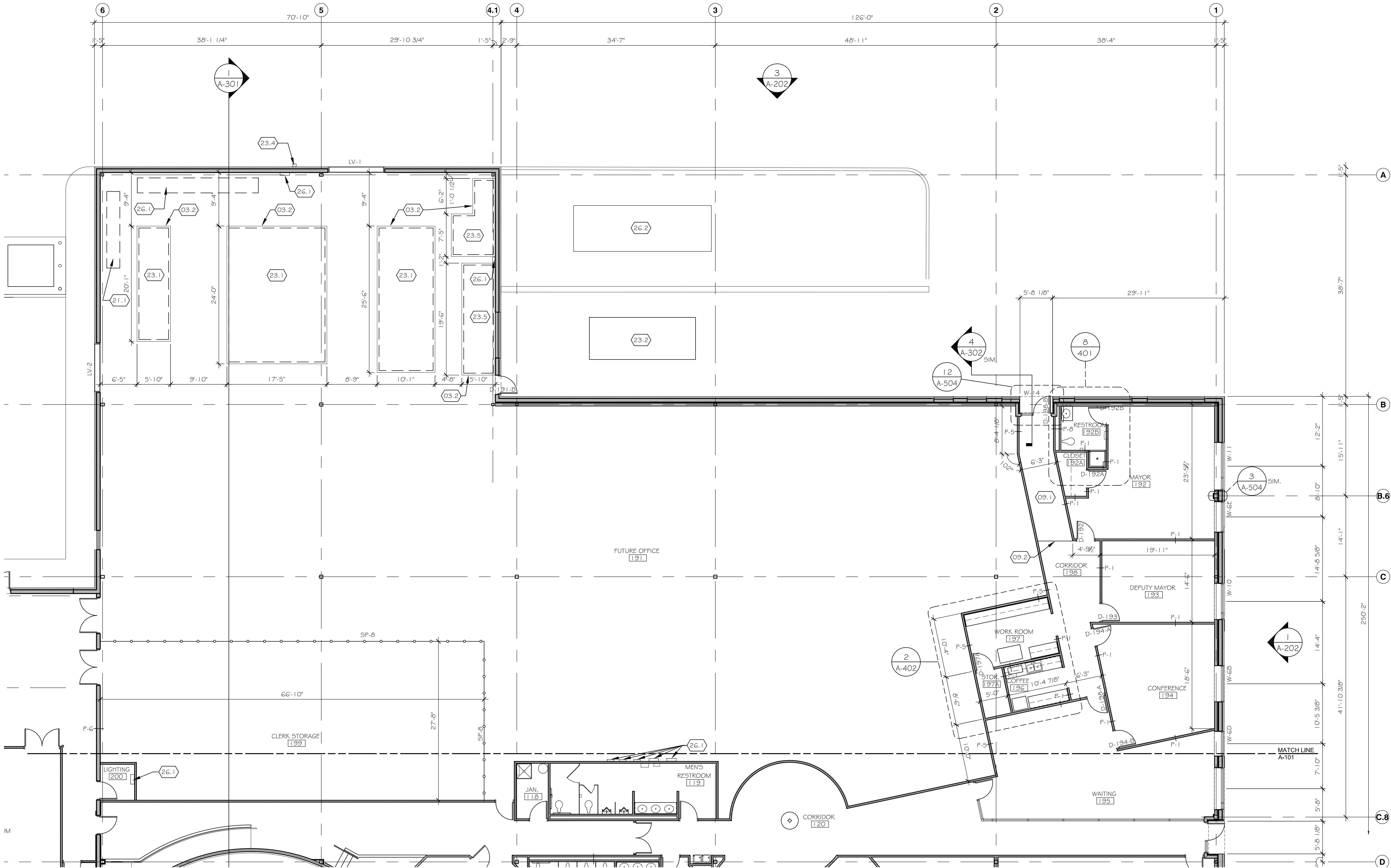
REVISIONS

0135-13-0010

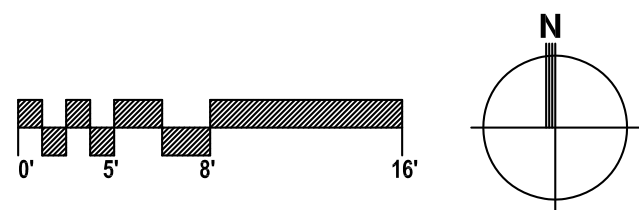
WWW.OHM-ADVISORS.COM

COPYRIGHT 2013 OHM ALL DRAWINGS AND WRITTEN MATERIALS APPEARING HEREIN CONSTITUTE THE ORIGINAL AND UNPUBLISHED WORK OF OHM AND THE SAME MAY NOT BE DUPLICATED, DISTRIBUTED OR DISCLOSED WITHOUT PRIOR WRITTEN CONSENT OF OHM

DRAWING PATH: P:\600_010000\1510010_Westland City COU\BASIS Drawings\New Columbus Facilities Project\Contract\0135-13-001A-103.dwg Aug 01, 2013 - 6:53pm

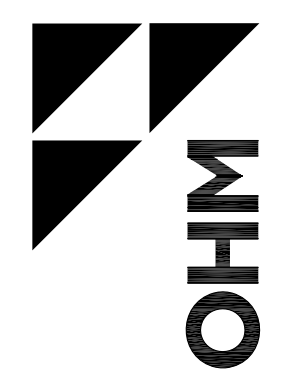


FLOOR PLAN - PART C
SCALE: 1/8" = 1'-0"



- FLOOR PLAN GENERAL NOTES:**
- DO NOT SCALE DRAWINGS. IF DIMENSIONS CANNOT BE DETERMINED OR DOCUMENTS ARE IN CONFLICT, THE CONTRACTOR SHALL OBTAIN CLARIFICATION FROM THE ARCHITECT PRIOR TO CONTINUATION OF WORK.
 - DIMENSIONS ARE FROM COLUMN CENTERLINES, FACE OF MASONRY OR FACE OF STUDS.
 - ALL DIMENSIONS LOCATING DOORS AND/OR WINDOWS ARE TO CENTERLINE OF OPENING, UNLESS NOTED OTHERWISE.
 - ALL DOORS ARE LOCATED TIGHT TO ADJACENT PERPENDICULAR WALLS/PARTITIONS UNLESS NOTED OTHERWISE.
 - PROVIDE FIRE RETARDANT TREATED WOOD BLOCKING AT ALL WALL OR CEILING ATTACHED ITEMS.
 - ALL CEILING, WALL AND FLOOR PENETRATIONS SHALL BE SEALED WITH APPROPRIATE MATERIAL. ALL FIRE PENETRATIONS SHALL BE SEALED AND IDENTIFIED PER LOCAL AND STATE BUILDING CODES.
 - SEE A-001 FOR SITE AND KEY PLAN INFORMATION.
 - SEE SHEETS A-002 - A-100 FOR INFORMATION RELATED TO FIRE RATED ASSEMBLIES.
 - SEE SHEETS A-501 - A-503 FOR ENLARGED PLANS AND DETAILS.
 - SEE SHEETS A-601 - A-605 FOR ALL SCHEDULES.
 - SEE SHEETS A-701 & A-801 FOR INTERIOR DETAILS AND INTERIOR FINISHES.
 - COORDINATE LOCATION OF FIRE EXTINGUISHERS WITH LOCAL FIRE INSPECTOR, NFPA & THE OWNER'S INSURANCE COMPANY. MAXIMUM TRAVEL DISTANCE TO FIRE EXTINGUISHER = 75'.
 - PROVIDE ADA SIGNAGE AT EXITS & PUBLIC RESTROOMS AS REQUIRED BY CODE AND PER ADA GUIDELINES.
 - REFER TO EXTERIOR ELEVATIONS FOR WINDOW LOCATIONS NOT SHOWN ON PLAN.

- FLOOR PLAN CODED NOTES:**
- DIVISION 03 - CONCRETE**
- 03.1 NEW CONCRETE SIDEWALK (REFER TO CIVIL & LANDSCAPE SHEETS)
- 03.2 4" EQUIPMENT CONCRETE PAD
- DIVISION 04 - MASONRY**
- DIVISION 05 - METALS**
- 05.1 NEW GALVANIZED STEEL PLATFORM (REFER TO STRUCTURAL SHEETS)
- DIVISION 06 - WOOD, PLASTICS, & COMPOSITES (REFER TO ARCH. WOODWORK SCHEDULE)**
- DIVISION 07 - THERMAL & MOISTURE PROTECTION (REFER TO INSULATION SCHEDULE)**
- DIVISION 08 - OPENINGS (REFER TO DOOR & WINDOW SCHEDULES)**
- 08.1 SKYLIGHT ABOVE
- DIVISION 09 - FINISHES (REFER TO ROOM TREATMENT SCHEDULE)**
- 09.1 PROVIDE WALK OFF CARPET THIS AREA.
- 09.2 PROVIDE TRANSITION STRIP BETWEEN FLOORING TYPES.
- 09.3 6"-Ø DIA. INLAY IN TILE FLOOR - PROVIDED BY OWNER.
- 09.4 PROVIDE METAL COLUMN ENCLOSURE, REFER TO DETAIL 4/A-504 (SIM.)
- DIVISION 10 - SPECIALTIES (REFER TO SPECIALTY SCHEDULE)**
- DIVISION 11 - EQUIPMENT (REFER TO EQUIPMENT SCHEDULE)**
- DIVISION 12 - FURNISHINGS (NOT USED)**
- DIVISION 21 - FIRE SUPPRESSION**
- 21.1 EXISTING FIRE RISER (REFER TO FIRE PROTECTION SHEETS)
- DIVISION 22 - PLUMBING**
- 22.1 BOILERS (REFER TO PLUMBING AND HVAC SHEETS)
- 22.2 FLOOR MOUNTED 3-COMPARTMENT SINK (REFER TO PLUMBING SHEETS)
- 22.3 WALL MOUNTED HAND SINK (REFER TO PLUMBING SHEETS)
- 22.4 FLOOR MOUNTED WATER HEATER (REFER TO PLUMBING SHEETS)
- DIVISION 23 - HVAC**
- 23.1 AIR-HANDLING UNIT (REFER TO HVAC SHEETS)
- 23.2 CHILLER (REFER TO HVAC SHEETS)
- 23.3 FLOOR MOUNTED FIN TUBE RADIATOR (REFER TO HVAC SHEETS)
- 23.4 GAS METER (REFER TO HVAC SHEETS)
- 23.5 HVAC EQUIPMENT (REFER TO HVAC SHEETS)
- DIVISION 26 - ELECTRICAL**
- 26.1 ELECTRICAL PANELS/EQUIPMENT (REFER TO ELECTRICAL SHEETS)
- 26.2 EMERGENCY GENERATOR (REFER TO ELECTRICAL SHEETS)
- DIVISION 32 - EXTERIOR IMPROVEMENTS (REFER TO CIVIL & LANDSCAPE SHEETS)**



OHM

VERT DATUM	HOR DATUM	SCALE	HAS NOTED	CITY/STATE	COUNTY	TOWN	SECTION	PROJ. NO.	DATE
				WESTLAND	WAYNE			05	28 JUL 13
				CITY OF WESTLAND					
				REVISIONS					
				0135-13-0010					
				WWW.OHM-ADVISORS.COM					

ISSUED FOR:
BIDDING & PERMIT

WESTLAND CITY HALL
36300 WARREN ROAD
WESTLAND, MI 48168

SHEET
A-103

1. ALL WORK WHICH MODIFIES OR DISTURBS THE EXISTING ROOFING SYSTEM SHALL BE COORDINATED THROUGH THE EXISTING ROOFING SYSTEM MANUFACTURER AND INSULER SO AS NOT TO VOID THE EXISTING WARRANTY.
2. ALL CURBS, VENT STACKS, AND ROOF PENETRATIONS TO FLASHED PER MANUFACTURERS STANDARD DETAILS UNLESS NOTED OTHERWISE.
3. ALL FASCIAS, DOWNSPOUTS, FLASHINGS, COPINGS, GRAVEL STOPS, AND OTHER METAL ROOF ELEMENTS ARE TO BE FABRICATED PER ARCHITECTURAL SHEET METAL MANUAL.
4. COORDINATE EXACT LOCATIONS OF ALL ROOFTOP MECHANICAL EQUIPMENT, VENTS, EXHAUSTS, AND/OR PIPING WITH FLUING, HVAC, AND ELECTRICAL SHEETS. ALL PENETRATIONS MAY NOT BE SHOWN
5. ALL EXPOSED METAL FLASHINGS, COPINGS, FASCIAS, GRAVEL STOPS, ETC. TO BE USED SHALL BE GALVALUME.
6. REFER TO SECTIONS ON SHEET A-301 THRU A-304 FOR ADDITIONAL INFORMATION.
7. REFER TO SCHEDULES & SPECIFICATIONS FOR FINISH INFORMATION UNLESS NOTED OTHERWISE.

DIVISION 02 - EXISTING CONDITIONS

DIVISION 02 - EXISTING CONDITIONS

02.2 PATCH & REPAIR ROOF AS REQUIRED. REFER TO STRUCTURAL DWGS. FOR

Q2.3 MAINTAIN EXISTING ROOF SLOPE UNLESS OTHERWISE NOTED.

02.4 ROOF DRAIN & OVERFLOW SYSTEM TO REMAIN

07.1 INSTALL EPDM ROOF MEMBRANE OVER EXISTING INSULATION AND ROOF STRUCTURE. REINSTALL EXISTING BALLAST

07.2 INSTALL METAL COPING CAP OVER EXISTING ROOF STRUCTURE, REFER TO SECTIONS & DETAILS FOR INFORMATION

07.3 ROOF ACCESS HATCH, REFER TO DETAIL 2/A-503 & SPECIFICATIONS FOR ADDITIONAL INFORMATION

07.4 THERMOPLASTIC PVC ROOF MEMBRANE WITH FIBERGLASS REINFORCEMENT, INSTALL PER MFG. INSTRUCTIONS

07.5 EXPANSION JOINT (FIELD VERIFY EXISTING CONDITIONS). REFER TO DETAIL
M-500 FOR ADDITIONAL INFORMATION.

07.6 INSTALL METAL COPING CAP, REFER TO SECTIONS & DETAILS FOR ADDITIONAL

07.7 PROVIDE CRICKET (TAPERED INSULATION) AS INDICATED AT ROOF FIXTURES &

07.8 PRE-FABRICATED CANOPY SYSTEM, COORDINATE INSTALLATION & LOCATION WITH

DOOR OPENING. REFER TO DETAIL 6/A-503

08.1 SKYLIGHT, REFER TO DETAILS ON SHEET A-503 FOR INFORMATION

DIVISION 22 - PLUMBING

23.1 GRAVITY RELIEF EXHAUST SYSTEM, REFER TO DETAIL 2/A-503 & MECHANICAL

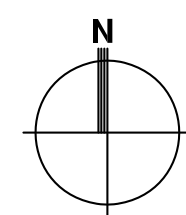
23.2 GOOSENECK VENT FOR INTERNAL EXHAUST FANS. REFER TO 7/A-503. REFER TO

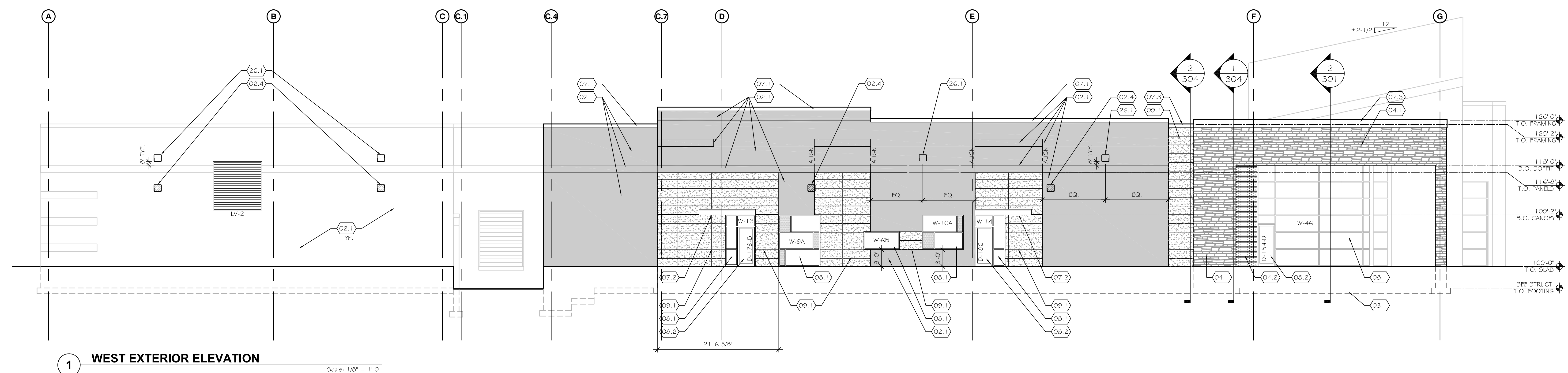
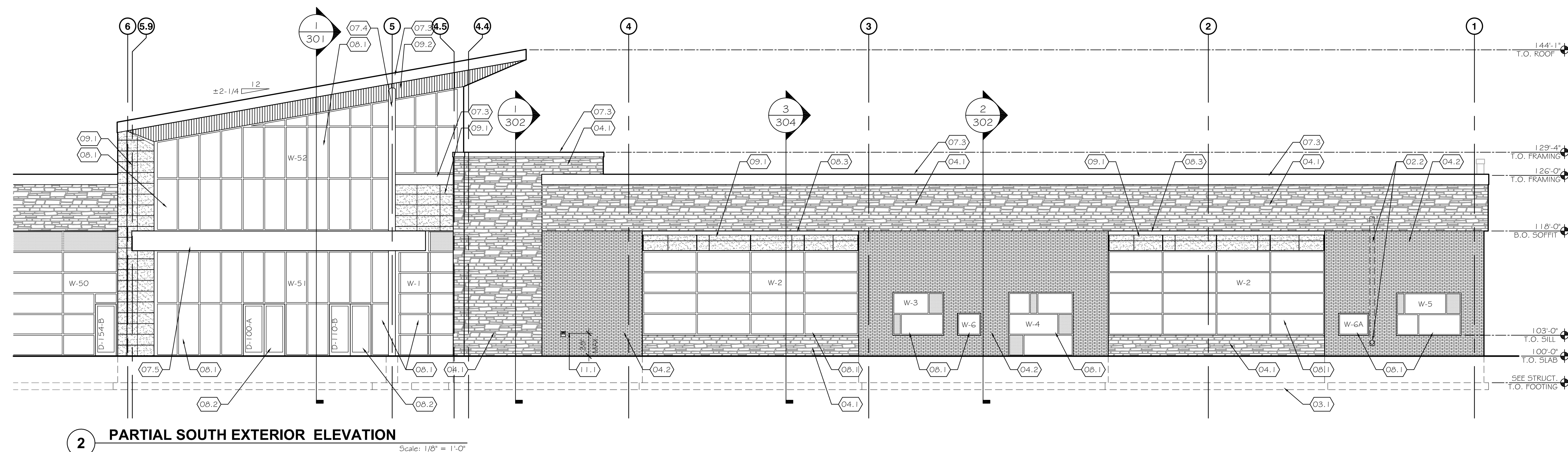
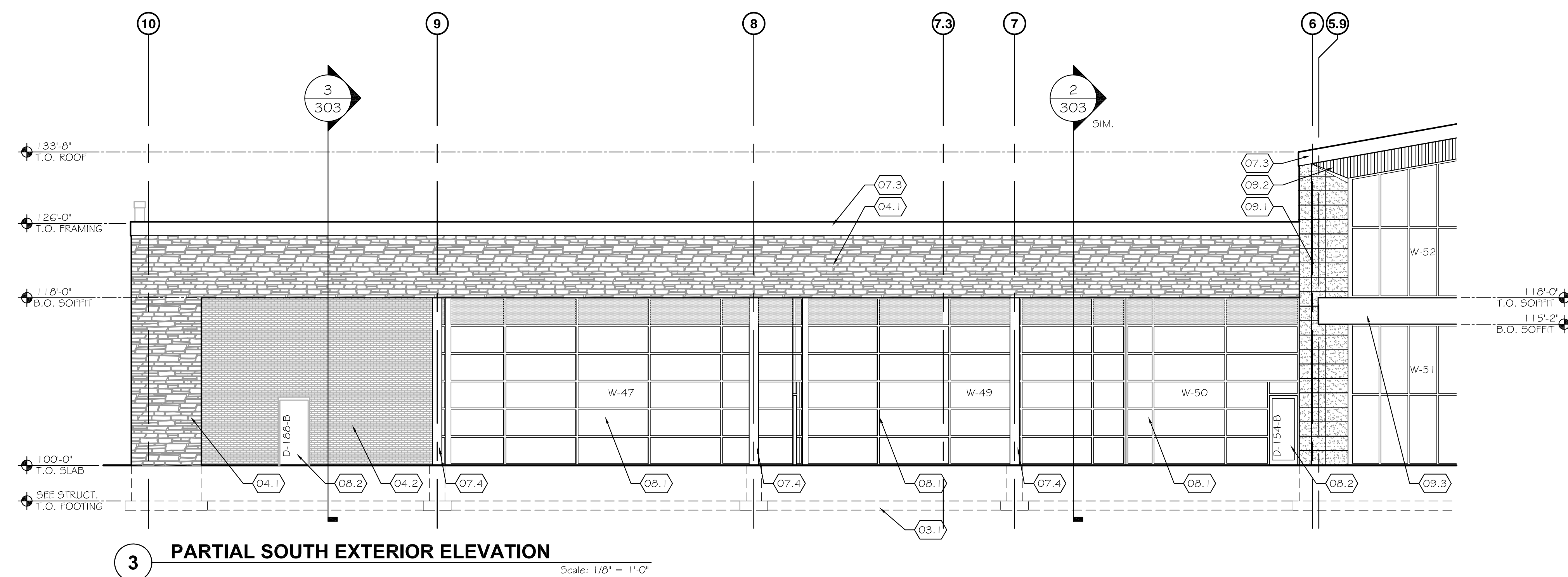
23.3 RAIL MOUNTED CONDENSING UNITS. REFER TO MECHANICAL DWGS. FOR

23.4 EXHAUST FAN. REFER TO MECHANICAL DWGS. FOR ADDITIONAL INFORMATION.



SCALE: 1/16" = 1'-0"





EXTERIOR ELEVATIONS GENERAL NOTES:

1. DO NOT SCALE DRAWINGS. IF DIMENSIONS CANNOT BE DETERMINED OR DOCUMENTS ARE IN CONFLICT, THE CONTRACTOR SHALL OBTAIN CLARIFICATION FROM THE ARCHITECT PRIOR TO CONTINUATION OF WORK.
2. DIMENSIONS ARE FROM COLUMN CENTERLINES, FACE OF MASONRY OR FACE OF STUDS.
3. PROVIDE FIRE RETARDANT TREATED WOOD BLOCKING AT ALL WALL OR CEILING ATTACHED ITEMS.
4. SEE SHEETS A-G01 - A-G05 FOR ALL SCHEDULES.

 EXTERIOR ELEVATIONS CODED NOTES:

DIVISION 02 - EXISTING CONDITIONS

- | | |
|------|--|
| Q2.1 | FINISH TO REMAIN UNLESS OTHERWISE NOTED, REFER TO SPECIFICATIONS FOR EXTENTS OF WORK ON EXISTING FINISHES |
| Q2.2 | FIRE DEPT. CONNECTION AND PIPE TO REMAIN, COORDINATE INSTALLATION OF NEW WORK AS REQUIRED |
| Q2.3 | INFILL EXISTING OPENING PER THE SECTION INDICATED |
| Q2.4 | REMOVE EXISTING LIGHT PACK. PATCH WITH SALVAGED BRICK. MORTAR COLOR AND FINISH TO MATCH EXISTING. (REFER TO ELECTRICAL SHEETS) |

DIVISION 03 - CONCRETE

- 03.1 FOUNDATION, REFER TO STRUCTURAL DRAWINGS FOR SCOPE OF WORK, LOCATION, SIZING & DETAILS

DIVISION 04 - MASONRY

- 04.1 STONE VENEER SYSTEM, REFER TO SECTIONS & DETAILS FOR INFORMATION
- 04.2 THIN BRICK VENEER SYSTEM, REFER TO SECTIONS & DETAILS FOR INFORMATION

DIVISION 07 - THERMAL & MOISTURE PROTECTION

- | | |
|------|---|
| 07.1 | INSTALL COPING CAP AT EXISTING WALL CONSTRUCTION, REFER TO DETAILS FOR FINISH INFORMATION |
| 07.2 | PRE-FABRICATED CANOPY SYSTEM, COORDINATE INSTALLATION & LOCATION WITH DOOR OPENING |
| 07.3 | INSTALL COPING CAP, REFER TO SECTIONS & DETAILS FOR INFORMATION |
| 07.4 | COLUMN ENCLOSURE, REFER TO SECTIONS & DETAILS |
| 07.5 | METAL PANEL CANOPY - ACM PANELS, ATTACH PER MFR'S INSTRUCTIONS |

DIVISION 08 - OPENINGS

- | | |
|------|---|
| 08.1 | GLAZING, REFER TO WINDOW SCHEDULE |
| 08.2 | DOOR, REFER TO DOOR SCHEDULE |
| 08.3 | SUN SHADE DEVICE, REFER TO SECTION FOR ADDITIONAL INFORMATION |

DIVISION 09 - FINISHES

- 09.1 CEMENT FIBER BOARD PANEL FINISH SYSTEM, REFER TO SECTIONS & DETAILS
09.2 ALUMINUM PLANK SYSTEM, REFER TO SECTIONS & DETAILS







DIVISION 11 - EQUIPMENT

- 11.1 NIGHT DEPOSIT BOX, REFER TO EQUIPMENT SCHEDULE FOR INFORMATION

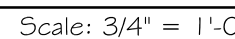
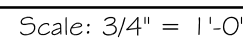
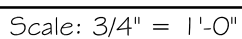
DIVISION 26 - ELECTRICAL

- 26.1 NEW WALL PACK LIGHT FIXTURE. (REFER TO ELECTRICAL SHEETS)

EXTERIOR MATERIAL LEGEND:

- | | |
|---|--|
|  | STONE VENEER SYSTEM, REFER TO SECTIONS & SPECIFICATION SECTION 04 40 00 |
|  | THIN BRICK VENEER SYSTEM, REFER TO SECTIONS & SPECIFICATION SECTION 04 70 00 |
|  | FIBER CEMENT BOARD SYSTEM, REFER TO SECTIONS & SPECIFICATION SECTION 00 00 00 |
|  | ALUMINUM PLANK SYSTEM, REFER TO SECTIONS & SPECIFICATION SECTION 09 50 00 |
|  | METAL FINISH (MATERIAL & COLOR VARIES), REFER TO SECTIONS & SPECIFICATIONS |
|  | EXISTING FINISH TO REMAIN, SEE SPECIFICATIONS FOR SCOPE OF WORK ON EXISTING CONDITIONS |

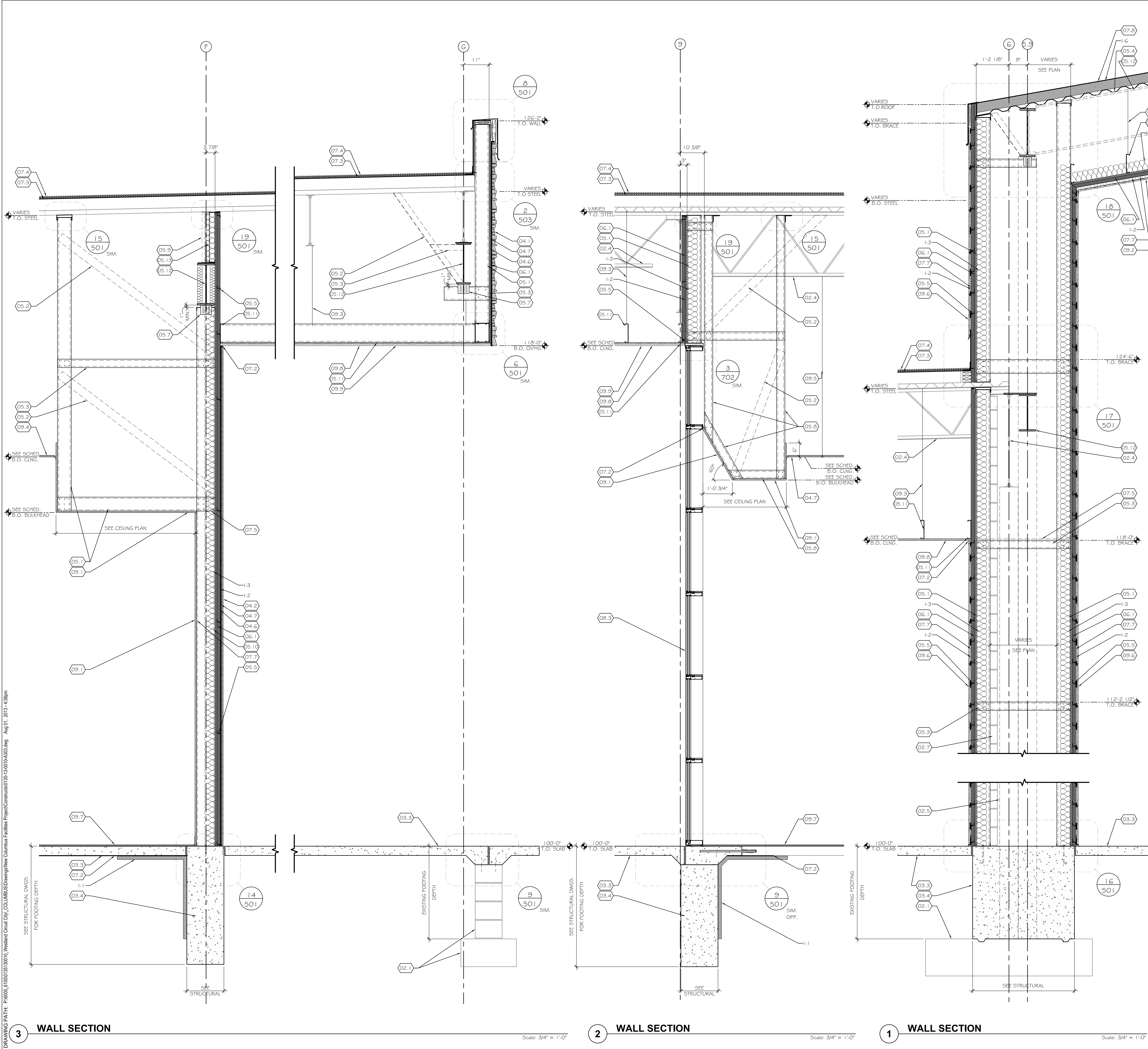
Scale: $\frac{3}{4}" = 1'-0"$



32.1 BACKFILL, REFER TO CIVIL AND LANDSCAPE DWGS. FOR INFORMATION

32.2 GRADE, MAINTAIN 8" BELOW TOP OF SLAB UNLESS OTHERWISE NOTED

DRAWING PATH: P:\600_0100013510010_Westland_City_Col\UMBS\Drawings\New Columbus Facilities Project\Contract\01351-13-001A-303.dwg Aug 01, 2013 4:38pm



WALL SECTION GENERAL NOTES:

- DO NOT SCALE DRAWINGS. IF DIMENSIONS CANNOT BE DETERMINED OR DOCUMENTS ARE IN CONFLICT, THE CONTRACTOR SHALL OBTAIN CLARIFICATION FROM THE ARCHITECT PRIOR TO CONTINUATION OF WORK.
- DIMENSIONS ARE FROM COLUMN CENTERLINES, FACE OF MASONRY OR FACE OF STUDS.
- PROVIDE FIRE RETARDANT TREATED WOOD BLOCKING AT ALL WALL OR CEILING ATTACHED ITEMS.
- SEE SHEETS A-601 - A-605 FOR ALL SCHEDULES.
- REFER TO STRUCTURAL DRAWINGS FOR INFORMATION NOT SHOWN IN ARCHITECTURAL SECTIONS.
- PATCH AND REPAIR EXISTING ELEMENTS TO REMAIN FROM NEW WORK.

WALL SECTION CODED NOTES:

DIVISION 02 - EXISTING CONDITIONS

- 02.1 FOOTING & FOUNDATION WALL TO REMAIN
- 02.2 PERIMETER INSULATION TO REMAIN
- 02.3 CONCRETE SLAB TO REMAIN, SEE FINISH SCHEDULE FOR FLOOR APPLICATION
- 02.4 ROOF STRUCTURE, DECKING & INSULATION TO REMAIN
- 02.5 COLUMN SHOWN FOR REFERENCE ONLY, SEE PLAN FOR ACTUAL LOCATION
- 02.6 PARAPET WALL TO REMAIN
- 02.7 CONCRETE MASONRY WALL TO REMAIN
- 02.8 MASONRY FINISH TO REMAIN WHERE INDICATED

DIVISION 03 - CONCRETE

- 03.1 CONCRETE FOOTING, REFER TO STRUCTURAL DWGS. FOR SIZE AND REINFORCING
- 03.2 MINIMUM 1/2" CONTROL / CONSTRUCTION JOINT, PROVIDE SEALANT
- 03.3 CONCRETE SLAB, REFER TO STRUCTURAL DWGS. FOR REINFORCING
- 03.4 CONCRETE PIER, ATTACH TO EXISTING FOOTING & FOUNDATION WALL, SEE STRUCTURAL DWGS. FOR CONNECTIONS & REINFORCING
- 03.5 CONCRETE STEM WALL, REFER TO STRUCTURAL DWGS. FOR REINFORCING

DIVISION 04 - MASONRY

- 04.1 CULTURED STONE VENEER IN MIN. 1/2" BED OF MORTAR OVER SCRATCH COAT
- 04.2 THIN BRICK VENEER IN MIN. 1/2" BED OF MORTAR OVER SCRATCH COAT
- 04.3 INSTALL SALVAGED BRICK MASONRY UNIT, ATTACH TO WALL WITH MASONRY TIES @ EVERY 6" COURSES VERTICALLY & 16" O.C. HORIZONTALLY
- 04.4 MAINTAIN 1-1/2" MINIMUM AIR GAP UNLESS OTHERWISE NOTED
- 04.5 PRE-CAST STONE SILL, MATCH CULTURED STONE VENEER FINISH
- 04.6 GALVANIZED METAL LATH
- 04.7 SCRATCH COAT OVER METAL LATH

DIVISION 05 - METALS

- 05.1 6" METAL STUDS @ 16" O.C.
- 05.2 METAL DIAGONAL BRACE AS REQUIRED, REFER TO STRUCTURAL DWGS.
- 05.3 METAL LATERAL BRACE, REFER TO STRUCTURAL DWGS.
- 05.4 1-1/2" METAL DECK, REFER TO STRUCTURAL DWGS.
- 05.5 1-1/2" HORIZONTAL METAL 2" FURRING
- 05.6 ROOF STRUCTURE, REFER TO STRUCTURAL DWGS.
- 05.7 SLOTTED DEFLECTION TRACK, REFER TO STRUCTURAL DWGS.
- 05.8 3-5/8" METAL STUDS @ 16" O.C.
- 05.9 PROVIDE LIGHT GAUGE METAL WIRE MESH FOR INSULATION BARRIER, FASTEN TO STRUCTURE AS REQUIRED
- 05.10 8" METAL STUDS @ 16" O.C.
- 05.11 8" METAL JOISTS @ 24" O.C.
- 05.12 STEEL BEAM, REFER TO STRUCTURAL DWGS.
- 05.13 2-1/2" METAL FURRING, SPACE 32" O.C. MAXIMUM
- 05.14 8" BOX HEADER, REFER TO STRUCTURAL DWGS.
- 05.15 MTL. BLOCKING AS REQUIRED
- 05.16 STRUCTURAL GIRT, REFER TO STRUCTURAL DWGS.

DIVISION 06 - WOOD, PLASTICS, & COMPOSITES

- 06.1 3/4" EXTERIOR GRADE FLYWOOD

DIVISION 07 - THERMAL & MOISTURE PROTECTION

- 07.1 6 MIL VAPOR BARRIER
- 07.2 PROVIDE MATERIAL TRANSITION SEALANT AS REQUIRED
- 07.3 EPDM ROOF MEMBRANE
- 07.4 RE-INSTALL ROOF BALLAST FINISH; PROVIDE NEW BALLAST AS REQUIRED
- 07.5 PROVIDE FIREBLOCKING AS INDICATED, REFER TO DETAIL 4/501
- 07.6 PROVIDE 1/2" MAX. EXPANSION JOINT, PROVIDE BACKER ROD AND SEALANT AT JOINT TO PROVIDE A WEATHER TIGHT CONNECTION AT MATERIAL TRANSITION
- 07.7 WEATHER RESISTANT BARRIER
- 07.8 THERMOPLASTIC PVC ROOF MEMBRANE WITH FIBERGLASS REINFORCEMENT

DIVISION 08 - OPENINGS

- 08.1 DOOR, REFER TO DOOR SCHEDULE FOR INFORMATION AND DETAILS
- 08.2 TRANSOM, REFER TO DOOR AND WINDOW SCHEDULE FOR INFORMATION AND DETAILS
- 08.3 ALUMINUM CURTAIN WALL GLAZING SYSTEM, REFER TO ELEVATIONS & WINDOW SCHEDULE FOR INFORMATION & DETAILS

DIVISION 09 - FINISHES

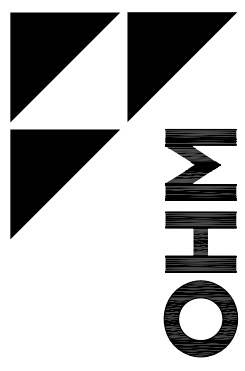
- 09.1 5/8" GYPSUM WALL BOARD
- 09.2 ALUMINUM PLANK SYSTEM, INSTALL PER MFR'S INSTRUCTIONS. SEE SPECIFICATIONS FOR ADDITIONAL INFORMATION
- 09.3 AIRCRAFT CABLE SUPPORTS, ATTACH TO STRUCTURE ABOVE
- 09.4 ACOUSTICAL CEILING TILE & GRID, REFER TO CEILING PLAN AND FINISH SCHEDULE
- 09.5 PROVIDE GRID SUPPORTS PER MFR., ATTACH TO STRUCTURE ABOVE
- 09.6 FIBER CEMENT BOARD PANEL, ATTACH PER MFR'S INSTRUCTIONS
- 09.7 FLOOR FINISH, REFER TO ROOM TREATMENT SCHEDULE FOR INFORMATION
- 09.8 5/8" EXTERIOR GYPSUM SHEATHING
- 09.9 DIRECT APPLIED EXTERIOR FINISH SYSTEM, SEE SPECIFICATIONS FOR ADDITIONAL INFORMATION

DIVISION 10 - SPECIALTIES

- 10.1 SUN SHADE SYSTEM, INSTALL PER MFR'S INSTRUCTIONS. COORDINATE INSTALLATION WITH STRUCTURAL STEEL & CONTINUOUS INSULATION

DIVISION 32 - EXTERIOR IMPROVEMENTS

- 32.1 BACKFILL, REFER TO CIVIL AND LANDSCAPE DWGS. FOR INFORMATION
- 32.2 GRADE, MAINTAIN 6" BELOW TOP OF SLAB UNLESS OTHERWISE NOTED



OHM

WWW.OHM-ADVISORS.COM

VERT DATUM	HORIZ DATUM	SCALE	VAS NOTED	HAS NOTED	CITY/LA/STATE/SHIP	COUNTY	SECTION	TOWN	RANGE	COUNT	REVISIONS
					WESTLAND	WAYNE					
CITY OF WESTLAND											
REVISIONS											

WESTLAND CITY HALL
36300 WARREN ROAD
WESTLAND, MI 48168

ISSUED FOR:
BIDDING & PERMIT

SHEET
A-303

Scale: $3/4" = 1'-0"$

Scale: $\frac{3}{4}" = 1'-0"$

Scale: $\frac{3}{4}" = 1'-0"$

Scale: $3/4" = 1'-0"$

32.1 BACKFILL, REFER TO CIVIL AND LANDSCAPE DWGS. FOR INFORMATION
32.2 GRADE, MAINTAIN 8" BELOW TOP OF SLAB UNLESS OTHERWISE NOTED